

ecos



I live in the lap of nature
surrounded by 480 acres of
greenery and lake. Ssshhhhh!
The beauty of nature amidst
the city's buzz.
Imagine!



I am right where you always
wanted. I complete your world.
Schools, Offices, Malls and
Hospitals are just minutes away.
Awesome!



I am not just a home, but heaven
for you. Chirping birds, gentle
breeze and beautiful mornings
will whisper into your ears,
'Live life one more time'.
Marvellous!



I shall stand tall in front of you
because I am also a dream for
those who want to create a
master piece. An architectural
excellence.
Trustworthy!



I am **ecos**

Your dream. Your home.

In the heart of Kolkata's fast-growing - New Town (Rajarhat).
Just opposite Eco Tourism Park.

205
Luxurious
Apartments

2.2 acres
(approx)

4 Blocks

B+G+12
B+G+11



environs

The precious next door neighbour - The Eco Tourism Park. Trees. Flowers. Birds. Water body. Fresh air. For you to be more.

companion

Convenience as the mantra of life. Schools, IT hub, hospitals, malls, recreational centres, metro station, everything is just around the corner.

odyssey

The private piece of heaven. With amenities and comforts galore. And with the stunning clubhouse features, the joyful moments will be never ending.

solicitude

The engineers of a dream. Developed by Amit Realty Group and Shree RSH Group, owned by Ambey Group & Sai Ply Pvt. Ltd. it's set to add colours to your life.



environs

Where you don't find the obvious. The tranquility will be a bliss. At ECOS, environs is not about things that surround you, but the beauty that will drive you into solitude of serenity!

So cool!



environs

Imagine a place where nature is a wonder
Your eyes will behold the greenery
Eco-friendliness will leave with a hangover
And you will cherish nature's discovery

You will be often drowned in that feeling of nostalgia
Soaked in music of winds, birds and leaves
Nature's landscape designed to leave you in euphoria
You and me will create unforgettable memories



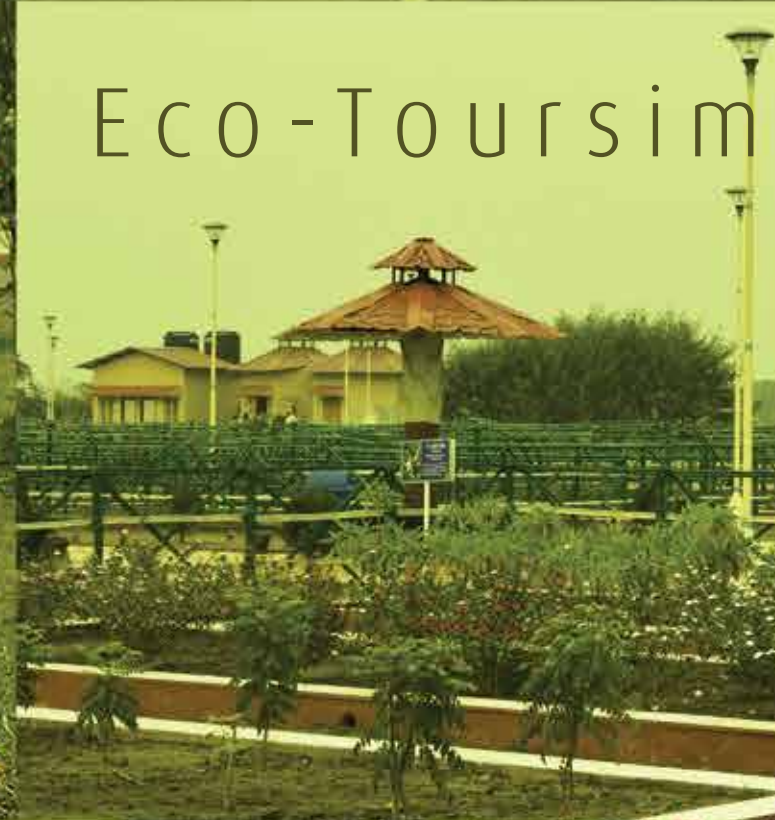


Perspective Balcony View based on actual image

You shall have the grandest balcony

480 acres of greenery including the 104 acres lake. The largest park of its kind in India. With different thematic areas like butterfly garden, tea garden, tropical tree garden, herbal garden and activities and facilities like bird watching, musical fountain, ice skating rink, mistika banquet hall, paddle boating, kayaking, zorbing, eco island for conferences and luxury resort, food park etc. The Eco-Tourism Park, Rajarhat is a wonder that beholds everybody that visits from places far and wide.

All of this right across your living room. Wish you had asked for something else from God?



Eco-Toursim Park



Will leave you
eco-holic!





companion

The nearest shopping mall will be your wife's true 'leisure companion'; the near-by school will be your child's 'education companion'; and the wi-fi connectivity across the neighbourhood will be your 'tech-savvy companion'. You will be a few hundred metres away from a luxurious hotel. The new proposed metro station would be within your hindsight.

You will be a winner of true companionship! We would sum up your life in three words - Simple. Safe. Peaceful.

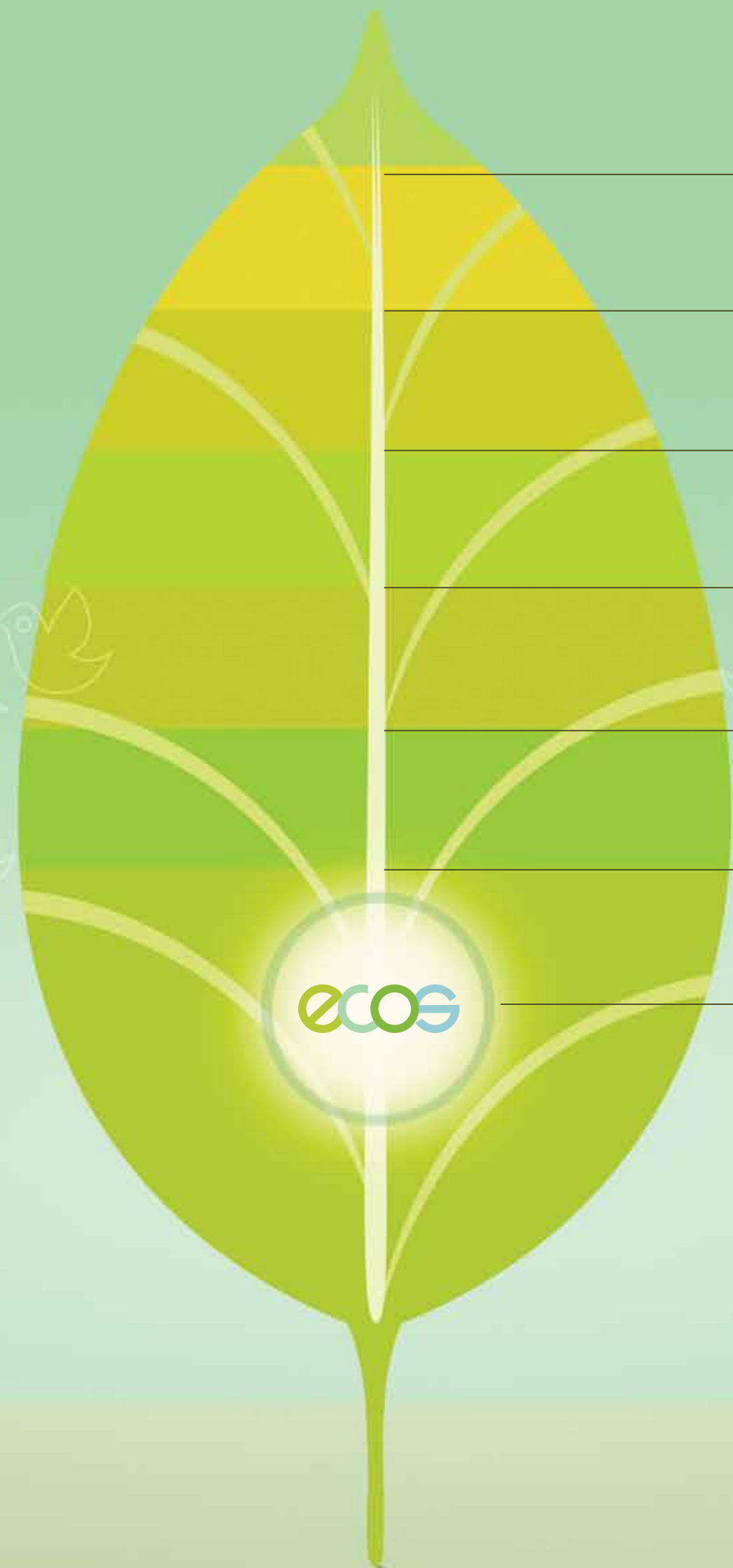
Companion

I love myself and others love me too
My friends around me will welcome you
Come live your life, do not compare
You will be bestowed with unmatched comfort and utmost care

All the conveniences will be right beside you
Your home will be an address, while others will follow you
Such is the grandeur where you will reside
Your life in a city and all landmarks by your side



turn off your GPS navigation!
everything is just round the corner.



0 Kms.

1 Kms.

2 Kms.

3 Kms.

4 Kms.

5 Kms.

6 Kms.

Major Developments and facilities*

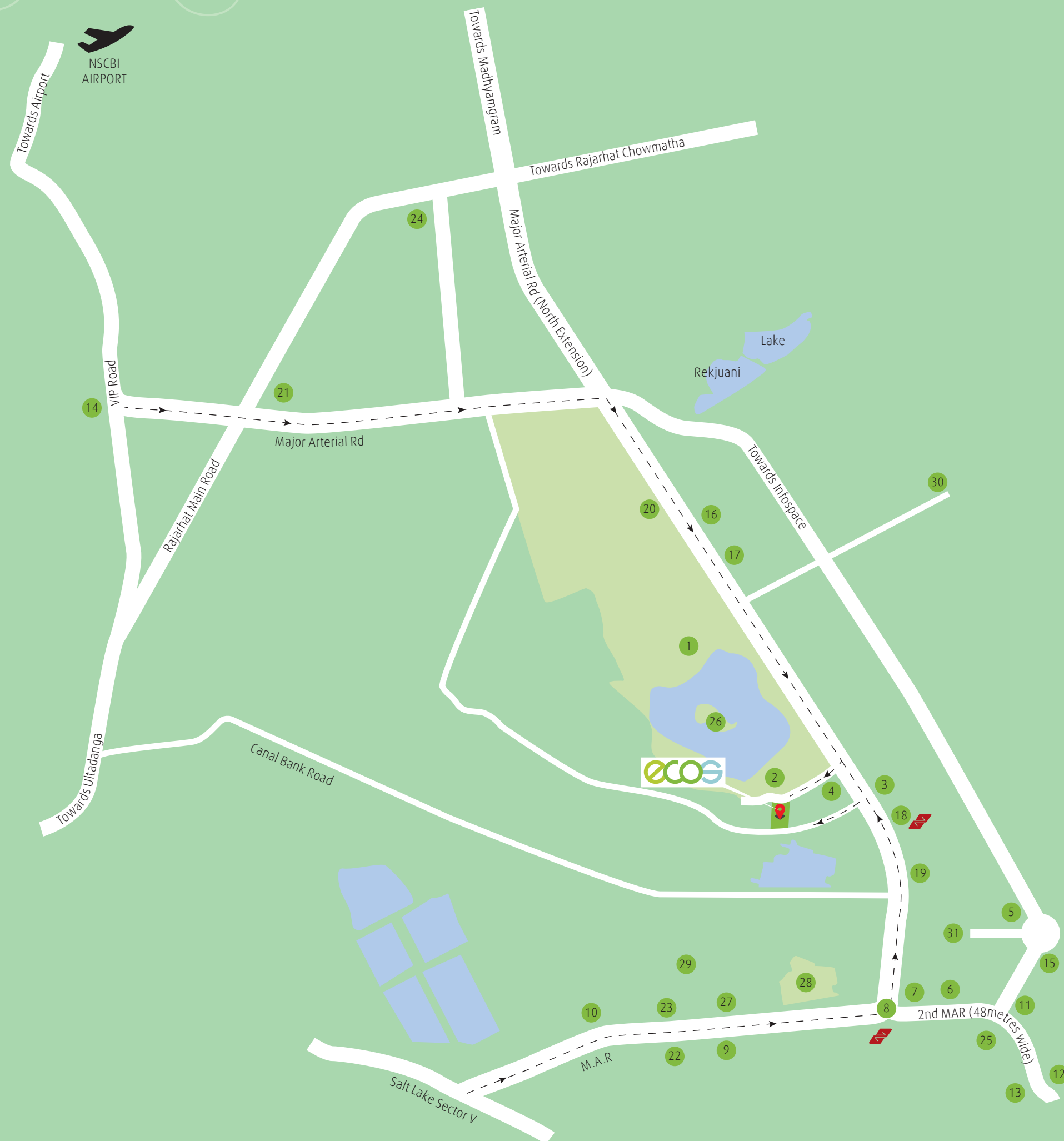
Health Care Facilities	Ohio Hospital Tata Medical Hospital	3 Kms. 3 Kms.
Commercial Hubs	Eco Space DLF IT Park DLF SEZ Unitech Infospace International Finance Hub Convention Centre	3.3 Kms. 4.5 Kms. 3.3 Kms. 3.2 Kms. 1.2 Kms. 3.1 Kms.
Retail Junctions	Axis mall City Centre 2 Big Bazar	3.8 Kms. 4.9 Kms. 4.1 Kms.
Educational Institutions	DPS Megacity Newtown Techno India College St. Xavier's Proposed Campus IIT Proposed Campus	3.7 Kms. 3.1 Kms. 6.1 Kms. 6.1 Kms.
Accommodation and Recreation	Novotel Swissotel Westin Hotel Eco Park	3.4 Kms. 5 Kms. 0.8 Kms. 0 Kms.
Transportation	Proposed Metro (Kalakhetra Metro Station) International Bus Terminus (upcoming) New Town Bus Terminus Jatragachi Bus Stop	0.9 Kms. 5.6 Kms. 4.3 Kms. 0.6 Kms.

Approximate distances

Location



- 1 Eco Park
- 2 Upcoming Eco-Resort
- 3 Jatragachi Bus Stop - 0.6 kms
- 4 Vivek Tirtha
- 5 T.C.S SEZ - 3.5 kms
- 6 Tata Memorial Hospital - 3 kms
- 7 DPS New town - 2.6 kms
- 8 Rabindra Tirtha Metro
- 9 Novotel
- 10 DLF IT Park - 4.5 kms
- 11 Infospace
- 12 Uniworld City - 4.3 kms
- 13 Proposed IIT
- 14 Haldirams
- 15 DLF Sez
- 16 Synthesis Business Park
- 17 Int Financial Hub
- 18 Proposed Metro Kalakhetra - 0.9 kms
- 19 Westin Hotel - 0.8 kms
- 20 Convention Centre
- 21 City Centre II - 4.9 kms
- 22 Axis Mall
- 23 New Town Bus Terminus - 4.1 kms
- 24 INT. Bus Terminus
- 25 New Town PS
- 26 Eco Island
- 27 Pride Hotel/Terminus Mall
- 28 Senior Citizen's Park/New Town Fair Ground
- 29 Big Bazaar
- 30 DPS MegaCity
- 31 Ecospace





odyssey

Your search for ecstasy ends here!

ECOS is not about 'I', but 'We'.

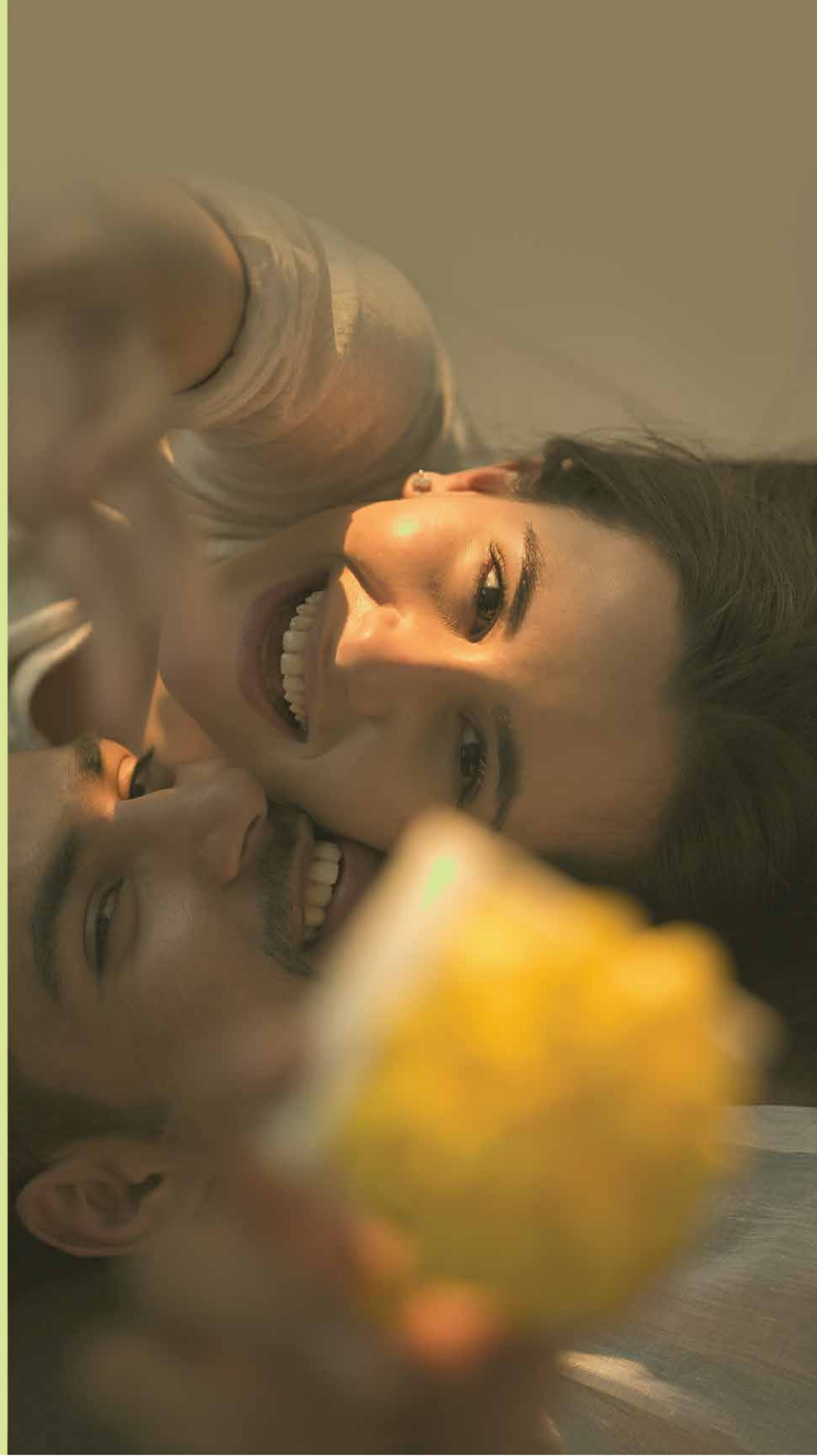
At ECOS, you will never be deprived of comfort. Your child will be lucky to enjoy the landscape of the playground. Your body will flourish in fitness at the gymnasium. Wash away your stress in the soothing swimming pool. You will celebrate your special moments at the multipurpose community hall.

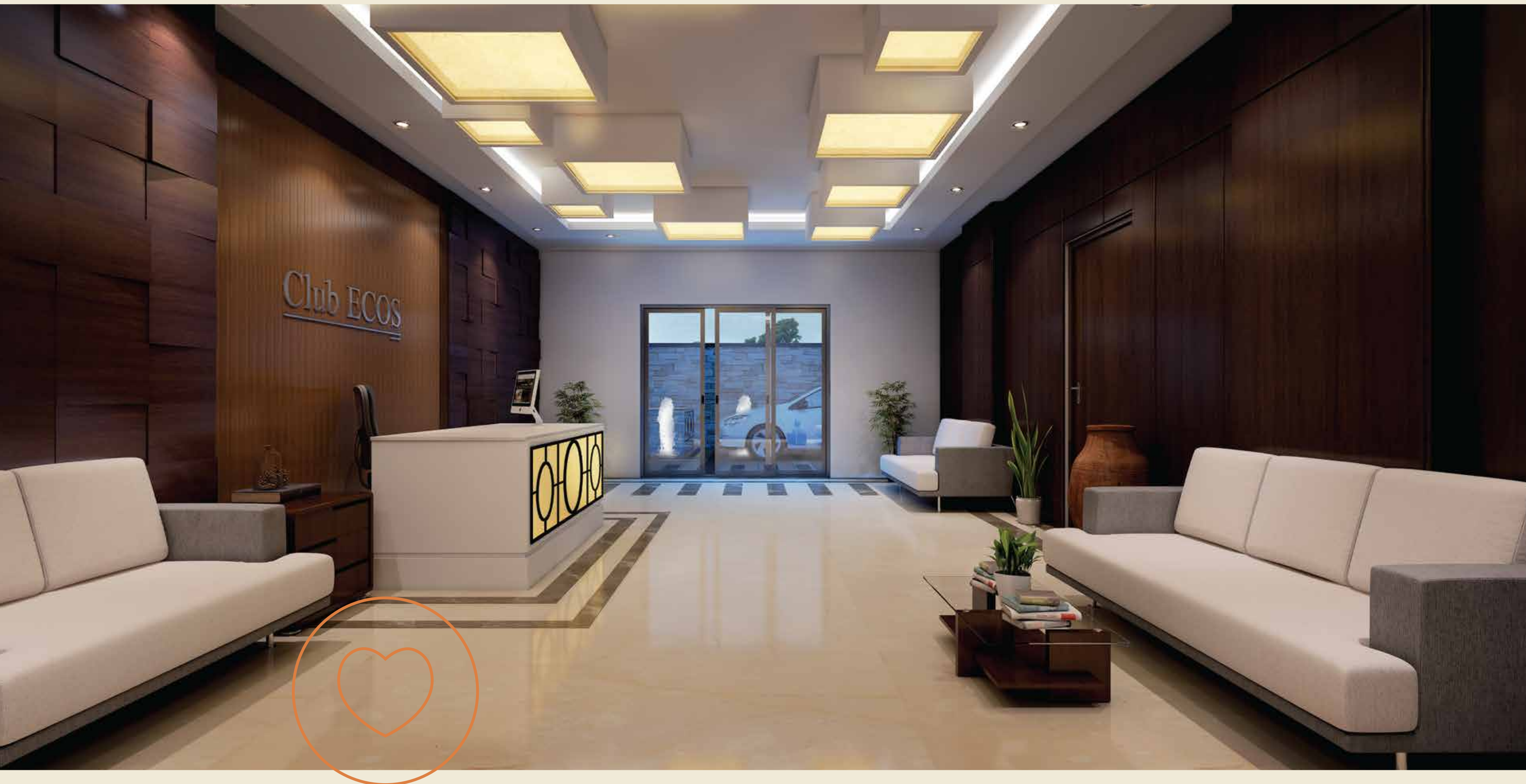
Ecstasy will never abandon you for a moment. This will be your heaven on earth!

Odyssey

Your quest for happiness ends here
The nature's bounty will be your atmosphere
A peace of mind and joy for your body
You will surrender yourself in nature's custody

Acres of gardens and open space will allure you
Your children will sweat in delight, sure to surprise you
Your evenings will be filled with laughter and smiles
You will love being at home, away from the city's shackles

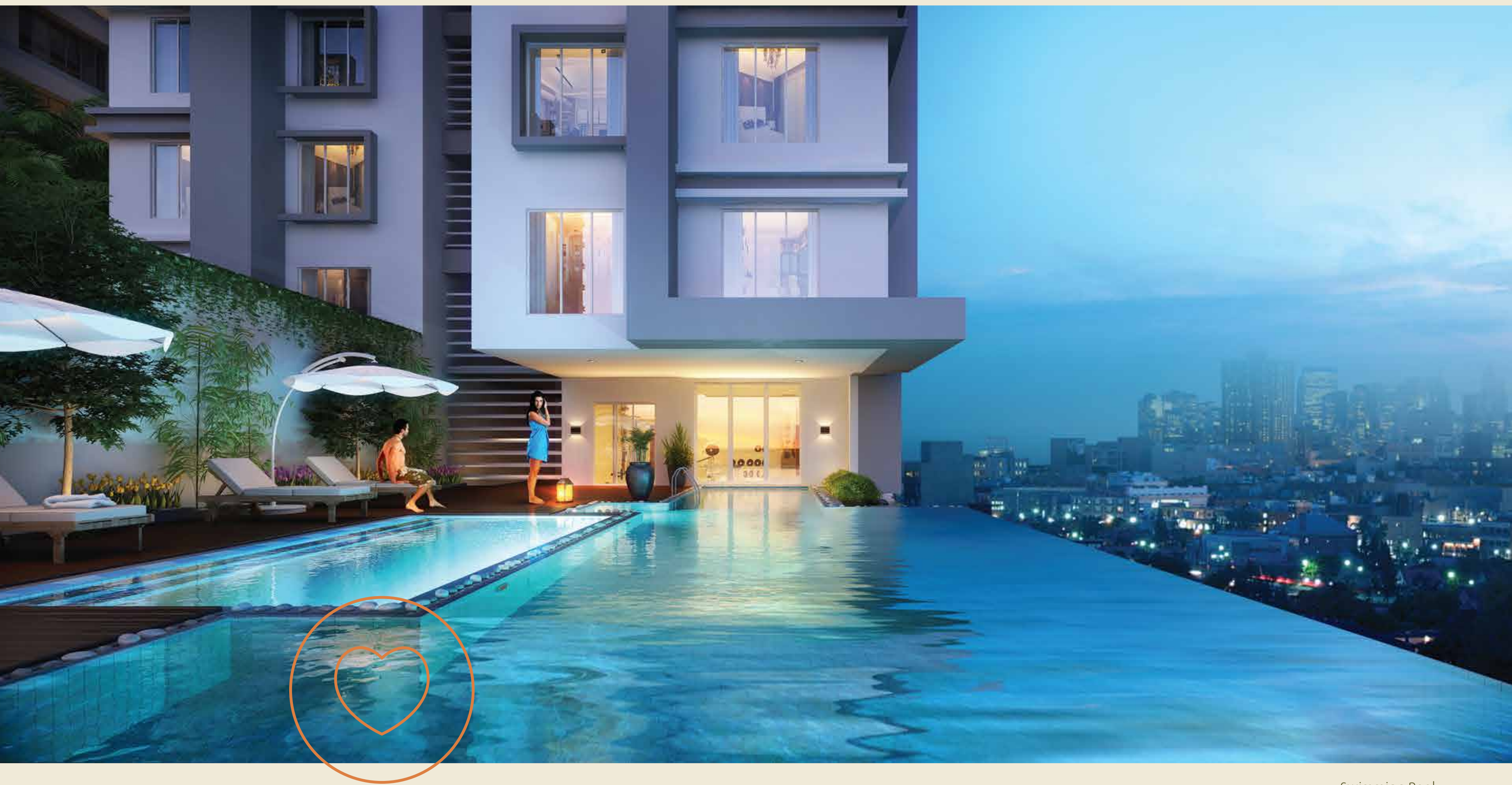




Here's what you will
pamper yourself with!

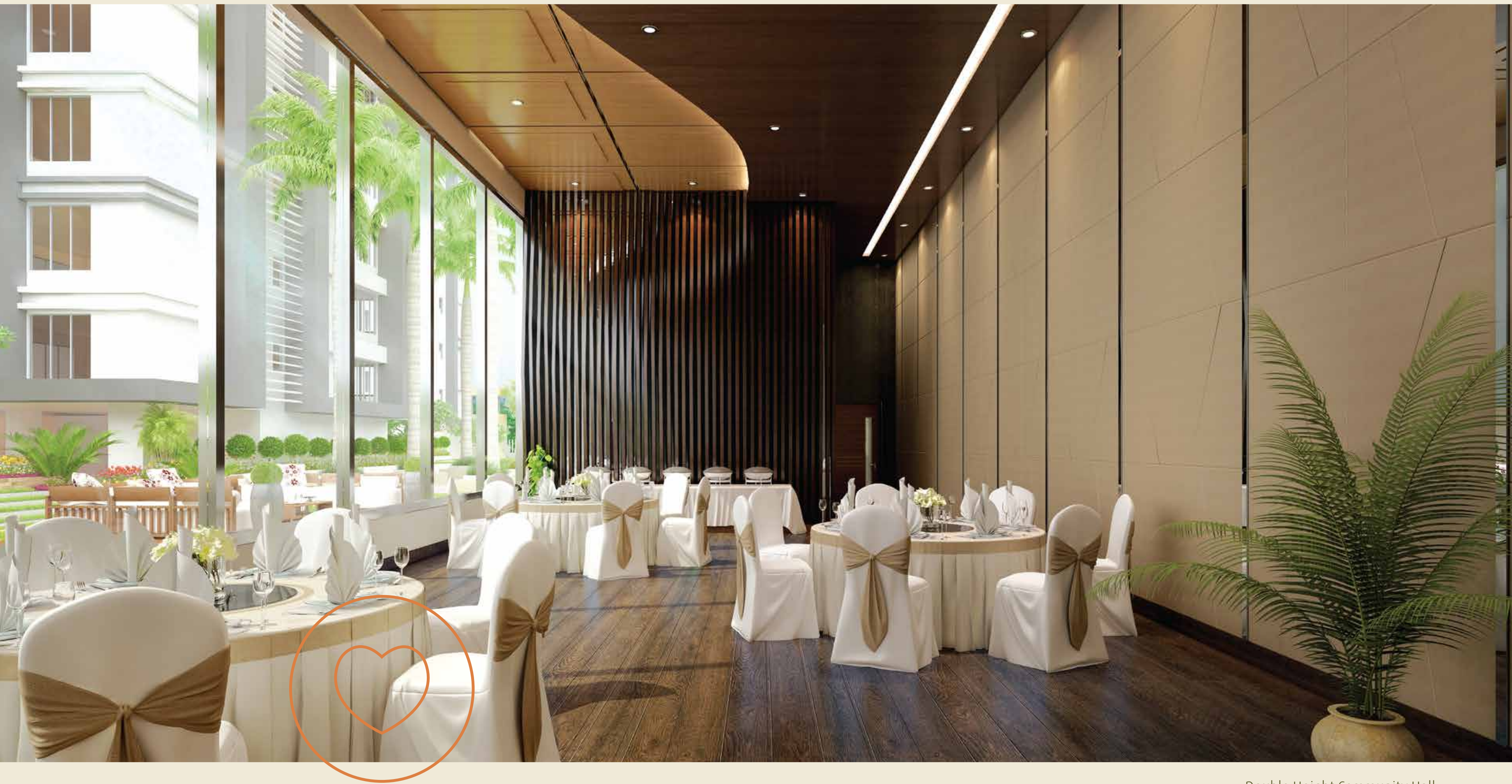
A Club House where your wish list comes true!

- Fully WI-FI Enabled Club
- Grand Club Lobby
- Double Height AC Community Hall
- Library
- Indoor Games Room
- Kids Pool
- Infinity Swimming Pool
- Gymnasium
- Yoga Room
- SPA
- Relaxing Lounge
- Cards Room



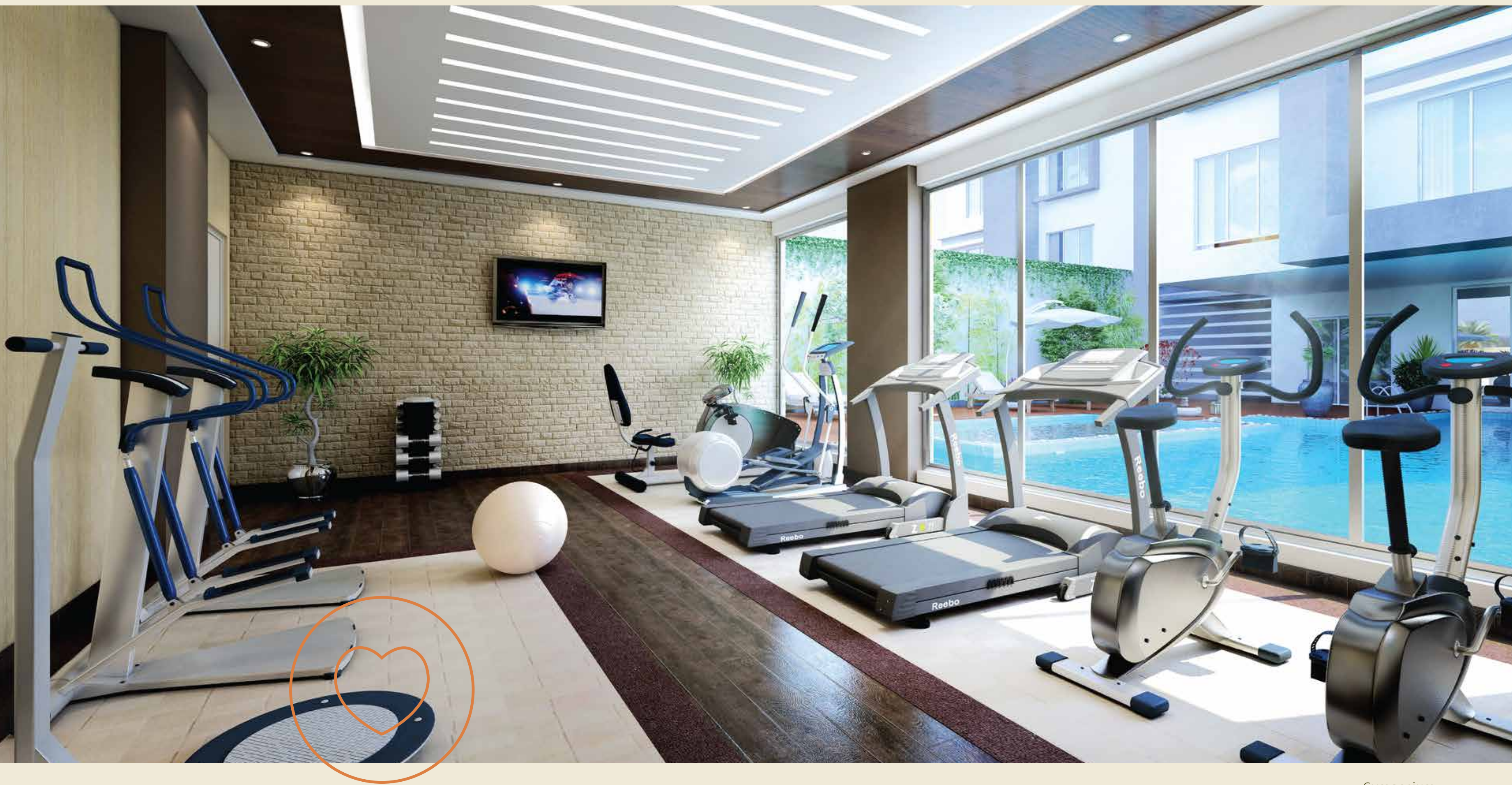
Swimming Pool

Take a dip in energy



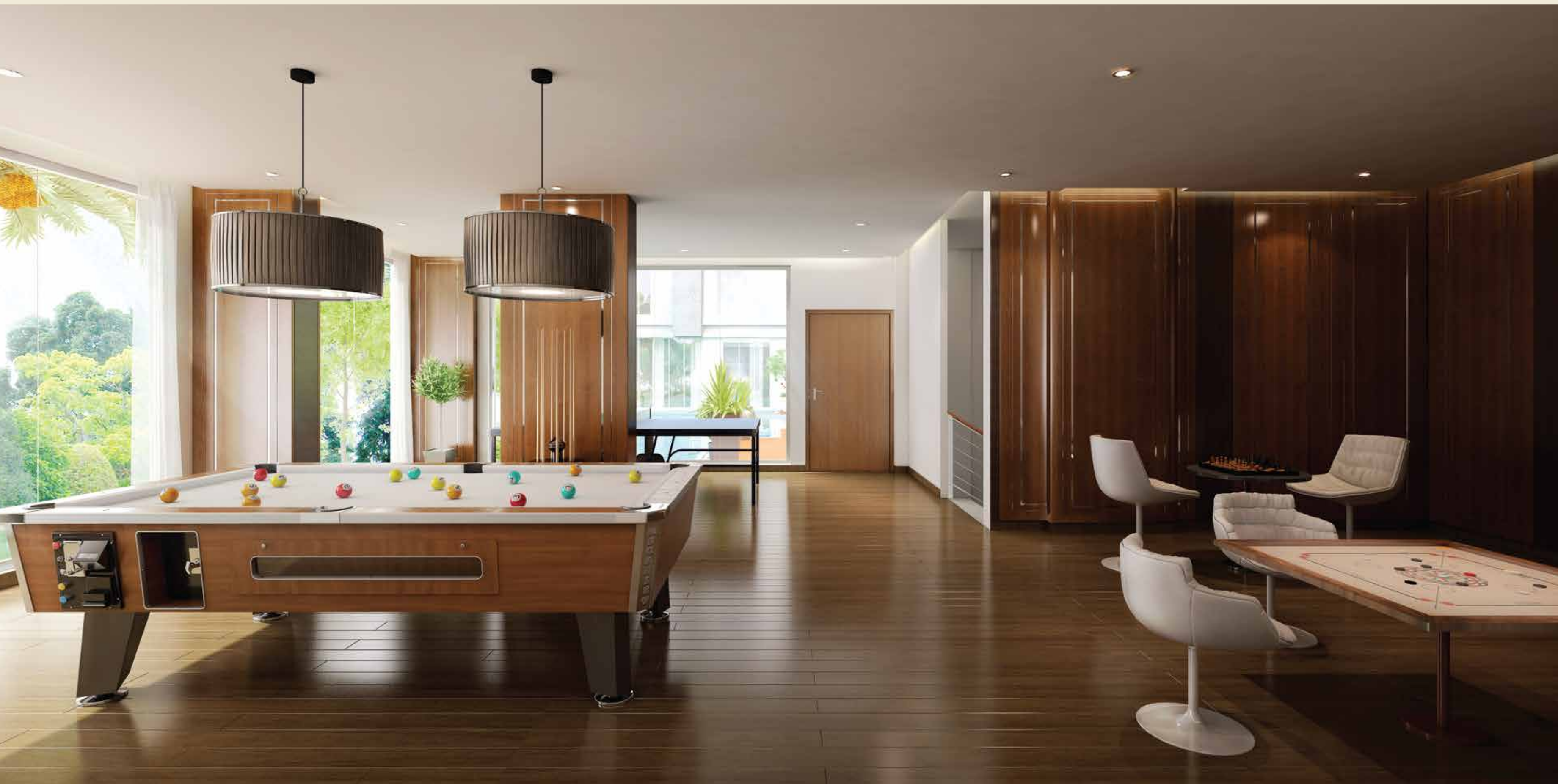
Double Height Community Hall

Celebrate life
like never before



Gymnasium

Health & fitness
are just a sweat away



Indoor Games Room

Play hard, smile harder

Yoga Room



Spa

Library

Rejuvenate your senses



And you are bound to create
stories on this journey

- Activity Lawn
- Jogging / Walking Lane
- Stage with Digital Projection Wall
- Mini Amphitheatre
- Focal Sculpture with Seating
- Grand Palm Plaza
- Aroma Seating
- Party Lawn
- BBQ Lawn
- Alfresco Dining
- Family Cabanas
- Multipurpose play area (basketball hoop, volley ball, skating, kabbadi, karate etc.)
- Badminton Court
- Timber Board Walk
- Kids Play Area
- Trellis Area for Senior Citizen



The story of nostalgia

There's this funny thing about home;
It smells like me.
Sometimes, it even looks like me.
The rugs, the mattresses, the curtains,
all have a little bit of me in them.
I stay away from it for too long,
and it will call out to me.
And when I return,
it'll engulf me in a warm embrace.
And whisper, "Welcome home."

Foundation: Pile foundation

Structure: RCC framed structure

Interior Finish: Vitrified floor tiles in living/Dining and Bedrooms • Laminated wooden flooring
In Master Bedroom • Walls-Plaster of Paris

Exterior Finish: High quality cement based paint



The story of bliss

Never has life been so beautiful
The balcony beckons me
The moment I step-in
My son comes running to me
My husband licks his fingers every time
I cook something for him.
His beams at me, my heart skips a beat.
Each corner of the home
breathes life into me
And I keep pinching myself.
This is not a dream.

Kitchen: Floors-Anti Skid Ceramic tiles • Wall-Plaster of Paris • Counter-Granite
Sink-Stainless steel • Dado-Ceramic tiles up to 2 feet height above Counter
Toilet: Floor-Anti Skid Ceramic Tiles • Dodo-Glazed tiles up to 7 feet height • EWC-Branded
make • Wash Basin-Branded make • Fittings-Branded CP fittings of Jaguar or
equivalent with hot & cold mixing arrangement
Windows: Glazed Aluminium with openable and fixed combination
Doors: Frame-Timber • Shutter-Flush Door • Main Door-Panel Door • Balcony-Aluminium
sliding doors with full glazing



The story of freedom

I can't reach the door-knob,
Yet I am the first one to get there.
I'll trot away the entire afternoon
And return with my little imaginary
red cup of tea.
Daddy will sip it and let out a
satisfying sigh.
I'll smile.
This is my wonderland.

Electrical: AC point in living, dining and all bed rooms • Cable TV, telephone points in living/dining and in master bedroom • Adequate Electrical points in all bedrooms, living/dining, kitchen and toilet • Concealed copper wiring and modular switches of reputed make of Havells, Anchor or equivalent • Doorbell points at the main entrance door • Dedicated washing machine points

Elevator: 8 persons passenger lift and stretcher lift of reputed make of OTIS/ Schindler or equivalent



The story of a new beginning

It will be my 60th birthday
Celebrations were always
there in the past
But this will be special
'I am still young' I will say
laughingly
To my children and
grand children around
Laughter and cheers will
echo in each room
Each corner of our home will join in
'Welcome a new year
in your life with us'

Lobby & lift Wall: Stone Finish

Stair Case & Floor Lobby of Each Block: Kota/Marble/Tiles

Power Back Up: For common areas free • For Apartments at extra cost

Security Systems: CCTV for entrance lobby at ground floor, entry & exit of the complex

Intercom System: Between apartment to apartment & service areas



solicitude

A group that stands for trust!

ECOS is not just another real estate project. It is built with a belief to meet the needs of present without compromising on the future. A truly 'eco-intelligence' project, it is developed as a joint initiative by Amit Realty Group, Shree RSH Group, Ambey Group and Sai Ply Pvt. Ltd.



Solicitude

Your home is special and so you are
It is not just built with brick and mortar
You will find a touch of care and kindness
Your home built with love and fairness

A team of experts are on the board
Backed by years of experience and awards
A consortium of professionals that you can trust
They will build your home, to be your dearest



Solicitude

Amit Realty Group has over a decade of experience in creating landmark buildings and with a track record of sustained growth, customer satisfaction and innovation. Building with a difference is the Organization's Philosophy.

The Development Projects include Residential Complexes, Commercial Complexes & Retail Projects. Presently, We are operational majorly in the three states of India, namely West Bengal, Jharkhand and Rajasthan.

In Bokaro steel city, Jharkhand we have developed "The Bokaro Mall" a 3 lac sq.ft. development of a shopping mall which is currently the Biggest operational Mall in Jharkhand & Bihar.



The[®]
Bokaro
MALL



Shree RSH Group simply endeavors to create spaces that can inspire, reflect something more than routine life, which is the emotions of inhabitants. Our Group believes that excellence is about creating the exceptional out of the ordinary; It's about drawing inspiration from time and thinking ahead of it. It's about understanding the buyer's desire and delivering beyond his expectations.

Our Group has contributed manifold, both with its housing and commercial projects. Supported by the best professionals from conception to completion, the infrastructure is fully equipped with the latest technologies. Our single minded objective is to introduce newness with better technology, on time completion and transparency in all our projects.

At present the group is developing a IGBC pre-certified Platinum rated Residential Tower, 'RSH Signature' at Prince Ghulam Md. Shah Road, Kolkata & Super Luxurious Apartments, 'Basil Garden' at Rowland Road.



Basil Garden



RSH Signature



4A Rowland Road

Ambey Group started with a vision to develop Middle Income Group residential project in the upcoming place called "NEW TOWN- RAJARHAT" and now grown into an Organization stands for Customer satisfaction, timely delivery and quality product, certainly not only just four walls to live in. With its vision and mission, the Group transformed itself to one of the known real estate developer in Kolkata and other Cities.

The Group is in real estate development for last two decades developing projects across various location of Kolkata and Jamsheedpur. The Group's first project "New Town Metro Plaza" gave birth to a new location for a Condoville living.

From its Middle Income Group Residential project to premium project, township development, Commercial project, Ambey Group aims to develop all kind of projects.

Sai Ply (P) Ltd. is a dynamic, professionally managed trading Company, a leader in the wood panel products in India. Established in July 2002, the Company over the years has grown as a Plywood, laminates, MDF, DOORS trader in entire India. The business was started as early as 1990's with an aim to globalize this industry for quality enhancement.

Architect - Sanon Sen & Associates, Kolkata

MEP Consultant - SN Joshi Consultant Pvt. Ltd., Pune

Structural Consultant - PM Consultant, Kolkata

Landscape Consultant - Upasarg, Bangalore

Creative Consultant - Shreyansh Innovations Pvt. Ltd., Kolkata

Legal Consultant - Victor Moses & Company, Kolkata

Come home to bliss!

Floor Plan





Site Plan

- 2 BHK
- 3 BHK
- 4 BHK

1. Circulation & Peripheral Facilities:

- 1a. Entry /Exit
- 1b. Entry Plaza
- 1c. Security Cabin
- 1d. Waiting Area
- 1e. Drop off plaza to the Block Entry
- 1f. Water Feature at club Drop off
- 1g. Open Car park Lots
- 1h. Jogging/Walking Lanes
- 1i. Paved Driveway
- 1j. Entry/Exit to the Basement Ramp
- 1k. Sculpture on raised lawn
- 1l. Floral Drive
- 1m. Utility Area

2. Outdoor Group Activity Area:

- 2a. Activity Lawn
- 2b. Stage With Digital Projection Wall
- 2c. Mini Amphitheatre Seating

3. Sculpture Plaza:

- 3a. Focal Sculpture With Seating around
- 3b. Ground Palm Plaza
- 3c. Aroma Seating

4. Formal Lawn/ Party Area:

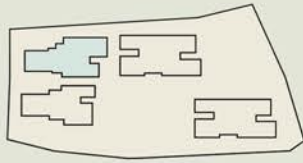
- 4a. Party Lawn
- 4b. Floral cascade
- 4c. Stepping Stone walk
- 4d. Stepped Seating
- 4e. BBQ(Veg & Non-Veg)
- 4f. Alfredo Dining
- 4g. Meeting Area

5. Informal Lawn/Picnic Area:

- 5a. Informal Play Lawns
- 5b. Timber Board Walk
- 5c. Covered timber View Deck
- 5d. Trellis Area for Senior Citizens
- 5e. Family Cabanas

6. Sports/Play Area:

- 6a. Kids Play Area On rubber mat floor
- 6b. Multipurpose Play Area(Basketball Hoop, Volleyball, Skating, Kabbadi, Karate etc.)
- 6c. Badminton Court
- 6d. Seater against Bamboo Plan
- 6e. Climbing Wall



Block 1 Typical Floor Plan (1st - 12th Floor)

Type of Apartment	Type of BHK	Carpet Area (sq.ft)	Balcony Area (sq.ft)	Built Up Area (sq.ft)	Terrace Area (sq.ft)	Gross Area
Flat 1	4	1392.82	59.68	1568.09		2091
Flat 2	3	1080.57	42.99	1223.49		1631
Flat 3	3	1080.57	45.41	1227.06		1636

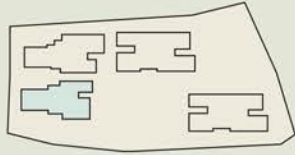
1st Floor Flat 1, with a gross area of 2199sq.ft includes a 215sq.ft of Built up area (50% chargeable) of attached terrace.
 2nd Floor Flat 3, with a gross area of 2041sq.ft includes a 810sq.ft of Built up area (50% chargeable) of attached terrace.



Club Area (Ground Floor)



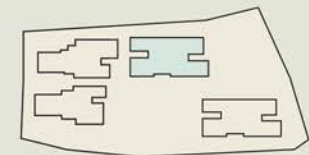
Club Area (First Floor Plan)



Block 2 Typical Floor Plan (1st - 12th Floor)

Type of Apartment	Type of BHK	Carpet Area (sq.ft)	Balcony Area (sq.ft)	Built Up Area (sq.ft)	Terrace Area (sq.ft)	Gross Area
Flat 1	3	1084.12	79.27	1256.63		1676
Flat 2	4	1382.92	60.97	1557.77		2077
Flat 3	3	1078.67	45.41	1224.67		1633

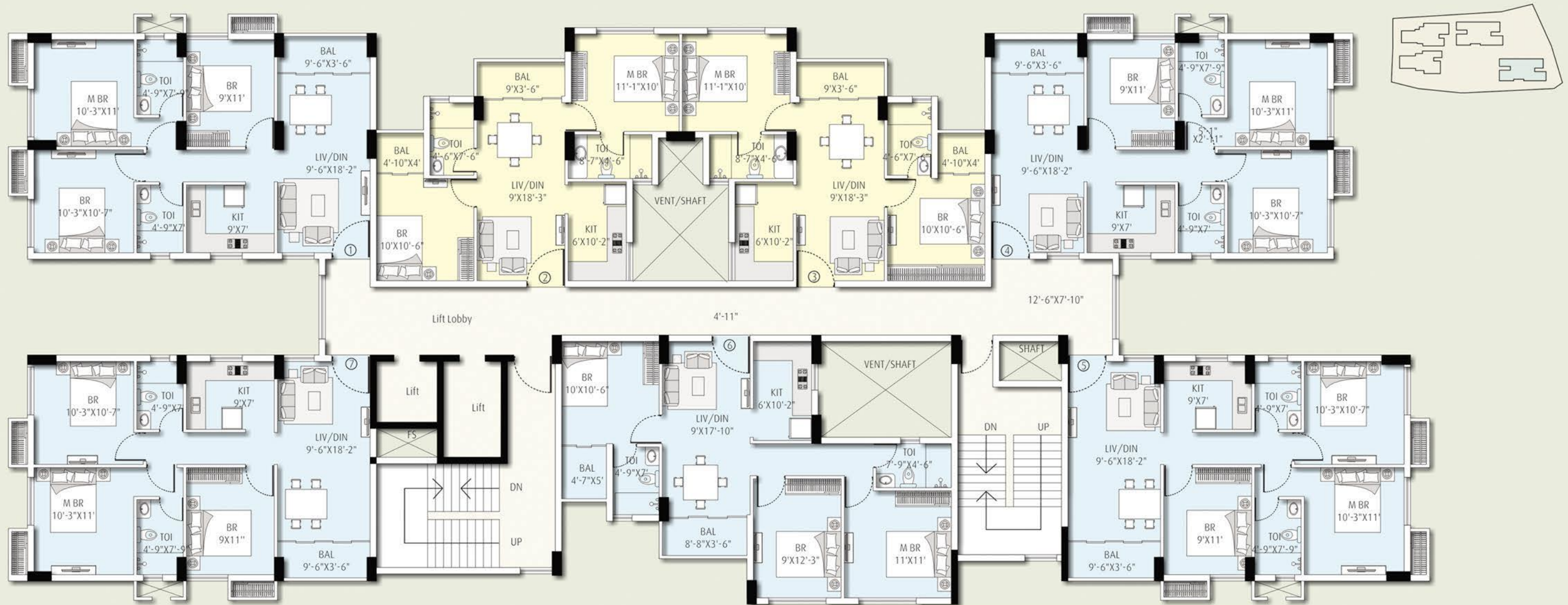
1st Floor Flat 1, with a gross area of 1838sq.ft includes a 324sq.ft of Built up area (50% chargeable) of attached terrace.



Block 3 Typical Floor Plan (1st - 12th Floor)

Type of Apartment	Type of BHK	Carpet Area (sq.ft)	Balcony Area (sq.ft)	Built Up Area (sq.ft)	Terrace Area (sq.ft)	Gross Area
Flat 1	3	908.88	40.57	1027.12		1369
Flat 2	2	683.85	40.56	795.36		1060
Flat 3	3	907.75	41.46	1032.7		1377
Flat 4	3	908.68	40.57	1026.91		1369
Flat 5	2	683.85	40.57	795.35		1060
Flat 6	3	908.68	40.57	1032.69		1377

2nd Floor Flat 3, with a gross area of 1703sq.ft includes a 652sq.ft of Built up area (50% chargeable) of attached terrace.



Type of Apartment	Type of BHK	Carpet Area (sq.ft)	Balcony Area (sq.ft)	Built Up Area (sq.ft)	Terrace Area (sq.ft)	Gross Area
Flat 1	3	742.17	36.68	858.3		1145
Flat 2	2	536.13	57.09	659.33		879
Flat 3	2	536.13	57.09	659.33		879
Flat 4	3	742.06	36.68	858.31		1145
Flat 5	3	742.06	36.68	862.65		1150
Flat 6	3	699.5	59.27	848.49		1132
Flat 7	3	742.06	36.68	862.66		1150



Block 4 Typical Floor Plan (1st - 11th Floor)

Co-developed by:

AmitRealty™



SHREE RSH GROUP
Our Commitment, Your Comfort

Co-owned by:

AmbeyGroup
Residential | Commercial | Township Development



SAI PLY PVT LTD

Marketed by:



Head Office

20/1 Ashutosh Chowdhury Avenue, 1st Floor, Ballygunge, Kolkata-700019, P +91 33 4010 4010

Site Address

Plot/Dag No. 238, 239, 240, Jatragachi, Newtown-Rajarhat, PS: Newtown, Kolkata-700157

For enquiries call: +91 33 4010 4040, +91 98317 88888

Ecos@amitrealty.com, W www.theecos.com

Disclaimer: This document is not a legal offering. It only describes our intent, purpose and concept. All the areas/dimensions/layout/elevations are only indicative and not as per scale. All the details are subject to change, alteration and modification as per the Management's discretion without any prior intimation.